



# CBCT Patient Fact Sheet

## What is CBCT (Cone beam CT)

CBCT (cone beam CT) is a compact, faster and safer version of the regular CT designed for use in office setting. Just like regular CT scan, it provides cross sections of tissues (bone, teeth, and soft tissue) for diagnosis of various oral and facial conditions. Through the use of a cone shaped X-Ray beam, the size of the scanner, radiation dosage and time needed for scanning are all dramatically reduced. We offer cone beam CT scans right in the comfort of our office. With our new Kodak CS9300 cone beam CT scan, we can obtain highly accurate 3-dimensional images of the jaws, teeth, and supporting structures to provide treatments more precisely and safely.

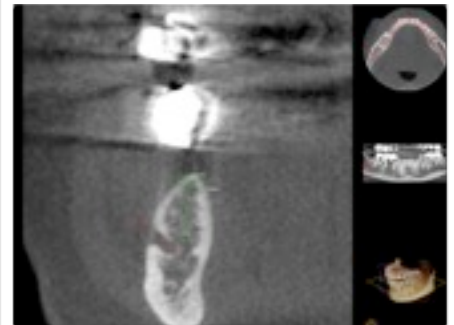


## How much does it cost?

- The CBCT is **250.00 per scan** regardless of its field view size.
- It may be covered under your medical insurance. We can provide you with a claim form for self-reimbursement.

## What are the indications for CBCT?

1. **Dental implant planning-** Evaluate bone availability, assess grafting needs, localize position of nerves and sinuses for safe implant placement, 3-dimensional implant planning and placement.
2. **Third molar surgery-** Assess position of the wisdom teeth and their relationship to nerves and other teeth.
3. **Impacted teeth-** Assess position of impacted canines or other teeth and plan for orthodontic exposure or extraction.
4. **Jaw cysts-** Diagnose jaw cysts or other forms of bony oral pathology
5. **Infections-** Diagnose the source of oral and facial infections and determine best course of treatment.
6. **Trauma-** Diagnose oral and facial injuries
7. **TMJ-** Asses anatomy of TMJ and its related structures



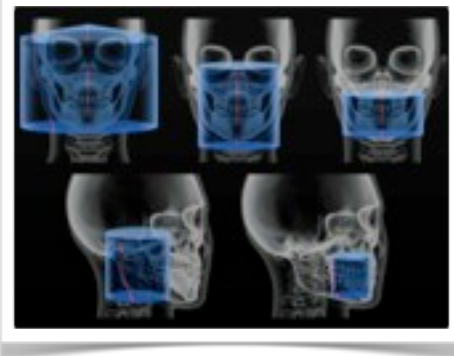
CBCTs are recommended only if there are good rationals for diagnosis and treatment planning



Dr. H. RYAN KAZEMI, DMD  
ORAL and MAXILLOFACIAL SURGERY  
BETHESDA, MD + WASHINGTON, DC

### Can you scan small areas to minimize radiation?

Yes. Our CBCT machine offers seven different fields of view, from the smallest section (5" by 5") to largest full view (17" by 13"). We can also obtain 2-dimensional panoramic X-rays and TMJ images when appropriate with even less radiation. Therefore we can select an appropriate size for the purpose and avoid unnecessary exposure.



### Is CBCT safe?

Yes. It has significantly less radiation dosage than conventional CT scans. We can take very small and focused CT scans with small field views therefore preventing unnecessary exposure.

### Scheduling

Appointments for CBCT are available daily. Call us at (301) 654-7070 or register online via our website, [www.facialart.com](http://www.facialart.com) for immediate scheduling.

### Do I need a referral?

No. However if you are referred by your dentist, he or she can send us an electronic online referral note via our website to communicate reason for CT scan.

### How long does it take?

The scan takes less than a minute to obtain and the images are available for evaluation immediately.

### How are the results shared with my other dentists?

The CBCT study can be shared in several ways. It can be loaded on a disc that allows your dentist to view it utilizing the same software. We can also share key images by internet via secure online sharing software. They can be sent in forms of jpeg images or PDF.

### Will I receive a radiology report?

The CBCT study can be read by a radiologist who will generate a radiology report. The cost for reading CBCT and report is \$85.00